

## Standard Preparation 1200 mm Solid Wall Shelf with Brackets

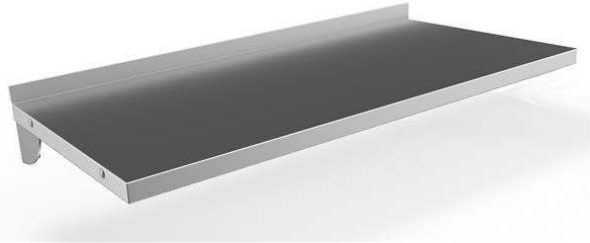
ITEM # \_\_\_\_\_

MODEL # \_\_\_\_\_

NAME # \_\_\_\_\_

SIS # \_\_\_\_\_

AIA # \_\_\_\_\_

**132824 (WSS124N)**Solid wall shelf with brackets,  
1200mm

### Short Form Specification

**Item No.** \_\_\_\_\_

Made from 304 AISI stainless steel, 1mm in thickness. Upturned edges. Integral radiused rear upstand, h=30mm. Wall brackets allow the shelf to be positioned at different heights.

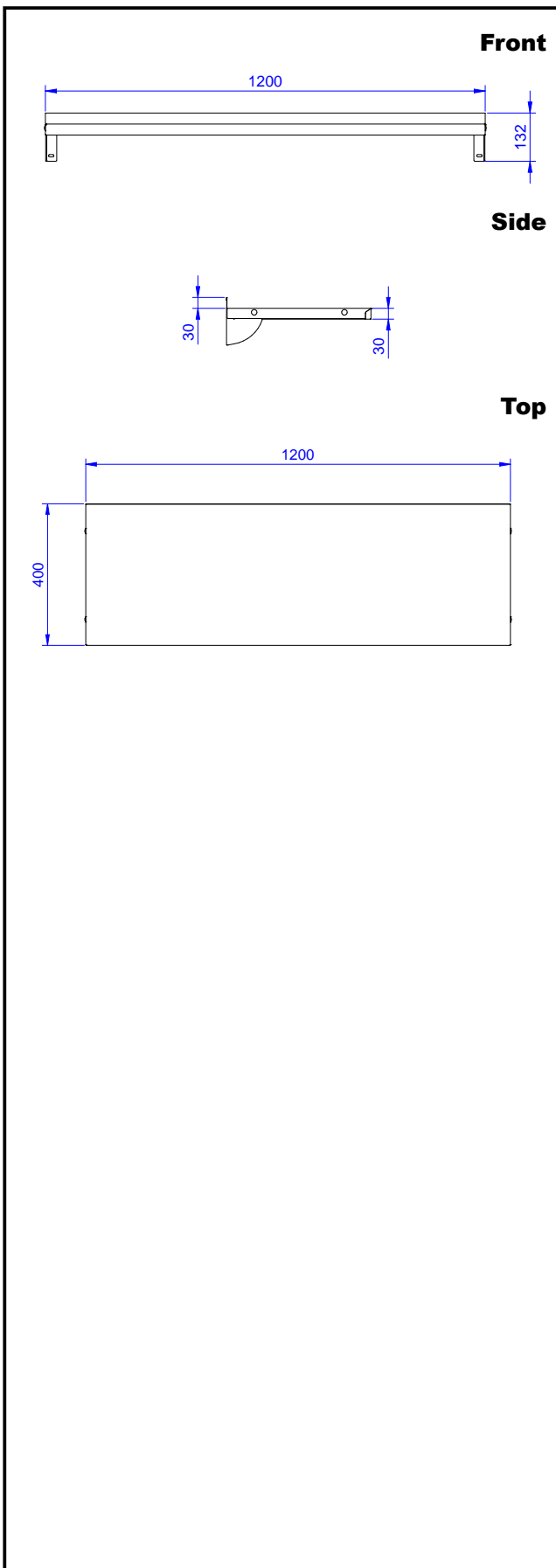
### Main Features

- Smooth surfaces, rounded corners, absence of edges and rear upstand facilitate cleaning operations.
- Sturdiness, stability and reliability of table accurately tested.

### Construction

- Made entirely in 304 AISI stainless steel, 10/10 in thickness; with a Scotch Brite finish.
- Upturned edges, 50 mm high, to guarantee operator safety.
- Incorporates a rear upstand to avoid spillage between wall and shelf.
- 100 mm upstand with 10 mm radiused corner and 13 mm deep, designed to be used against a wall.

**APPROVAL:** \_\_\_\_\_



## Key Information:

**External dimensions,  
Width:**

**132824 (WSS124N)** 1200 mm

**External dimensions,  
Depth:**

400 mm

**External dimensions,  
Height:**

30 mm

**Upstand Dimensions,  
Height:**

23 mm

**Upstand Dimensions,  
Depth:**

2 mm

**Upstand Dimensions,  
Radius:**

R=10

**Net weight:**

5 kg

**Standard Preparation  
1200 mm Solid Wall Shelf with Brackets**

The company reserves the right to make modifications to the products without prior notice. All information correct at time of printing.